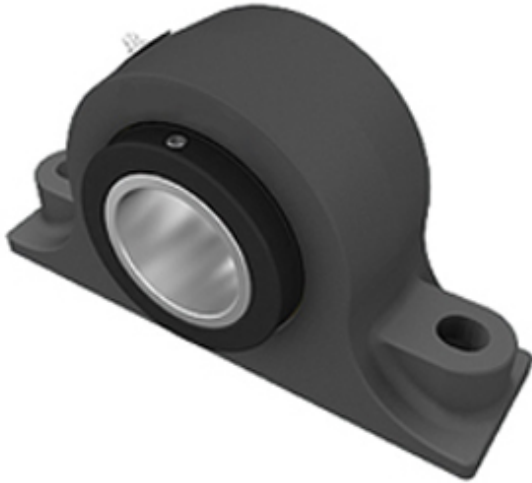




Hefei Wenhao Bearing Co., Ltd.

1.875 Inch | 47.625 Millimeter x 3.5 Inch | 88.9 Millimeter x 2.25 Inch | 57.15 Millimeter TIMKEN E-P2B-TRB-1 7/8 Pillow Block Bearings



E-P2B-TRB-1 7/8 Bearing 2D drawings and 3D CAD models

Bearing No. E-P2B-TRB-1 7/8

Category	Pillow Block Bearings
Inventory	0.0
Manufacturer Name	TIMKEN
Minimum Buy Quantity	N/A
Weight	5.45
EAN	0053893587158
Product Group	M06288
Number of Mounting Holes	2
Mounting Method	Concentric Collar
Housing Style	2 Bolt Pillow Block
Rolling Element	Tapered Roller Bearing
Housing Material	Cast Iron
Expansion / Non-expansion	Non-expansion
Mounting Bolts	5/8 Inch
Relubricatable	Yes
Seals	Double Lip Radial
Housing Configuration	1 Piece Solid
Inch - Metric	Inch
Other Features	Double Row Wide Inner Race With Set Screw
Long Description	2 Bolt Pillow Block; 1-7/8" Bore; 2-1/4" Base to Center Height; Concentric Collar Mount; Tapered Roller Bearing; 6-7/8" Minimum Bolt Spacing; 7-1/8" Bolt Spacing Maximum;



Hefei Wenhao Bearing Co., Ltd.

	Relubrica
Category	Pillow Block
UNSPSC	31171511
Harmonized Tariff Code	8483.20.40.80
Noun	Bearing
Keyword String	Pillow Block
Manufacturer URL	http://www.timken.com
Manufacturer Item Number	E-P2B-TRB-1 7/8
Weight / LBS	12
d	1.875 Inch 47.625 Millimeter
B	2.25 Inch 57.15 Millimeter
Bolt Spacing Minimum	6.875 Inch 174.625Millimeter
D	3.5 Inch 88.9 Millimeter
Bolt Spacing Maximum	7.125 Inch 180.975Millimeter
Nominal Bolt Center to Center	7 Inch 177.8 Millimeter
Actual Bolt Center to Center	0 Inch 0Millimeter
Shaft Size	1.875 in
Shaft Size Type	Imperial
Weight	12 lb
UPC Code	053893587158
Dimension B	3-1/2 in
Dimension L	8-7/8 in
Dimension A	2-1/2 in
Dimension J Min.	6-7/8 in
Dimension J Max.	7-1/8 in
Bolt Diameter	5/8 in
Dimension N	3/4 in
Dimension N ₁	7/8 in
Dimension H ₁	1-5/16 in



Hefei Wenhao Bearing Co., Ltd.

Dimension H ₂	4-1/2 in
Dimension d ₁	3-7/16 in
Dimension H	2-1/4 in
e	0.33
X (if F _a /F _r ≤ e)	0.87
Y (if F _a /F _r ≤ e)	2.64
X (if F _a /F _r > e)	0.7
Y (if F _a /F _r > e)	3.18
K Factor	1.83
C ₉₀ Dynamic Load Rating ¹	10300 lb
C ₀ Static Load Rating	43000 lb
F _{a-max} Maximum Permissible Thrust Load ²	2590 lb
F _{r-max} Maximum Allowable Slip Fit Radial Load ³	8400 lb
Max. Speed ⁴	3050 rpm
Note	Note: All units have a 1/8 pipe thread grease fitting The Maximum Permissible Thrust Load applies to conditions of slip fit with set screw mounting or in applications where a large moment loading occur